

**SHORT REPORT**

**Open Access**

# Invasion of *Ureaplasma diversum* in bovine spermatozoids

Melissa Buzinhani, Maurício Yamaguti, Rosângela C Oliveira, Beatriz A Cortez, Lucas Miranda Marques, Gláucia M Machado-Santelli, Mayra EO Assumpção and Jorge Timenetsky\*

## Abstract

**Background:** *Ureaplasma diversum* has been associated with infertility in cows. In bulls, this mollicute colonizes the prepuce and distal portion of the urethra and may infect sperm cells. The aim of this study is to analyze *in vitro* interaction of *U. diversum* isolates and ATCC strains with bovine spermatozoids. The interactions were observed by confocal microscopy and the gentamicin internalization assay.

**Findings:** *U. diversum* were able to adhere to and invade spermatozoids after 30 min of infection. The gentamicin resistance assay confirmed the intracellularity and survival of *U. diversum* in bovine spermatozoids.

**Conclusions:** The intracellular nature of bovine ureaplasma identifies a new difficulty to control the reproductive of these animals.

**Keywords:** *Ureaplasma diversum*, bovine spermatozoid, invasion, confocal microscopy

## Background

*Ureaplasma diversum* and some mycoplasma species may cause reproductive failures in animals, but the pathogenicity of these mollicutes in such disturbances remains unclear [1]. *U. diversum* has been associated with infertility in cows and may result in severe placentitis, fetal alveolitis, abortion or birth of weak calves [2,3]. This ureaplasma can be released through milk, conjunctiva and vaginal secretions and colonize the prepuce of bulls allowing contamination of semen collected from artificial vaginas or be transmitted at sexual intercourse [3,4]. In addition, the distal urethra of bulls is highly colonized with microbes, and decontamination procedures do not sufficiently reduce the number of microorganisms in sperm, including the mollicute species [5].

Antibiotics may be added to semen before freezing in straws to prevent or reduce microbial contamination [6], yet the efficacy of this procedure has not been documented.

Mollicutes were initially considered surface parasites on the epithelial linings, but since 1992 in human origin mycoplasma, these bacteria have been detected inside phagocytic and non phagocytic cells [7]. Baseman et al.

[8] demonstrated an intracellular localization of mycoplasmas of human origin in non phagocytic cell lines. *U. urealyticum* colonizes the human urethra and has been detected inside human spermatozoan cells [9]. The cell invasion of animal origin mycoplasmas has been recorded for some mollicutes [7-9], but this ability has not been observed for *U. diversum* in bovine spermatozoids. In this study, bovine sperm cells were infected *in vitro* with strains and field isolates of *U. diversum* and analyzed by confocal microscopy and gentamicin invasion assay.

## Results

### Analysis of labeling-*U. diversum* and motility/vigor of infected spermatozoids

The infective dose multiplicity of infection was  $10^4$  to  $10^7$  CCU/mL with 0.01-10 CCU/mL of ureaplasmas per spermatozoa. The viability of ureaplasmas was confirmed by production of typical ureaplasma colonies on agar plates. The average sperm motility before infection was  $40\% \pm 14.71$  and vigor 3.5. The motility and vigor after 30 min, 3 and 6 h of infection were  $20\% \pm 12.81$  and 3;  $10\% \pm 7.35$  and 2;  $2.5\% \pm 2.75$  and 1, respectively. The motility/vigor decreased by the time of incubation of infected and non infected spermatozoa.

\* Correspondence: [joti@usp.br](mailto:joti@usp.br)

Departamento de Microbiologia, Instituto de Ciências Biomédicas, Universidade de São Paulo, São Paulo, Brasil

### Microscopy of spermatozoids infected with *U. diversum*

The *U. diversum* strains and isolates were detected on the surface and inside the spermatozoids after 30 min, 3 and 6 h of infection. The ureaplasma fluorescence (red, displayed in orange, by the overlapping of red ureaplasma and green spermatozoids actin fluorescences) was observed located on the head, middle or tail of spermatozoids, but a specific pattern of this interaction was not detected. Figure 1 also provides images obtained with the field isolates and ATCC strains of *U. diversum*. Uninfected spermatozoa showed no red fluorescence. The surface location and intracellularity of *U. diversum* (strain 49782) in spermatozoid are presented in Figure 2 by sequential sectioning of a series of focal planes. Figure 3 shows isolate 94 inside spermatozoa after 30 min (a, b, c) and 3 h (d, e, f) of infection.

### Gentamicin invasion assay

The inactivation of ureaplasma after gentamicin exposure was determined to range between 90.00 to 99.94% of the initial inoculums after 3 hours of infection (Table 1). Determination of ureaplasma CCU/mL before and after antibiotic exposure is presented in Table 2. The obtained frequencies of CCU values ranged from 0.18 to 1.81% for studied isolates and ATCC strains from cows. The isolated TOURO1 recovered from bull sperm presented 10% frequency of invasion. The averages of invasion obtained after gentamicin exposure were not equal to the significance level of 5%. Strains 49782 and 49783 did not show differences in the average of invasion, but were lower compared with the field isolates. Strain 49782 from bull sperm presented an average significantly lower than isolate TOURO1. Average of invasion of isolate TOURO1 was significantly higher than the ATCC strains and isolates recovered from cows. The strain 49783 and the isolates from cows did not present significant differences in the average of invasion, except isolate A203. This isolate presented a higher average of invasion than others.

### Discussion

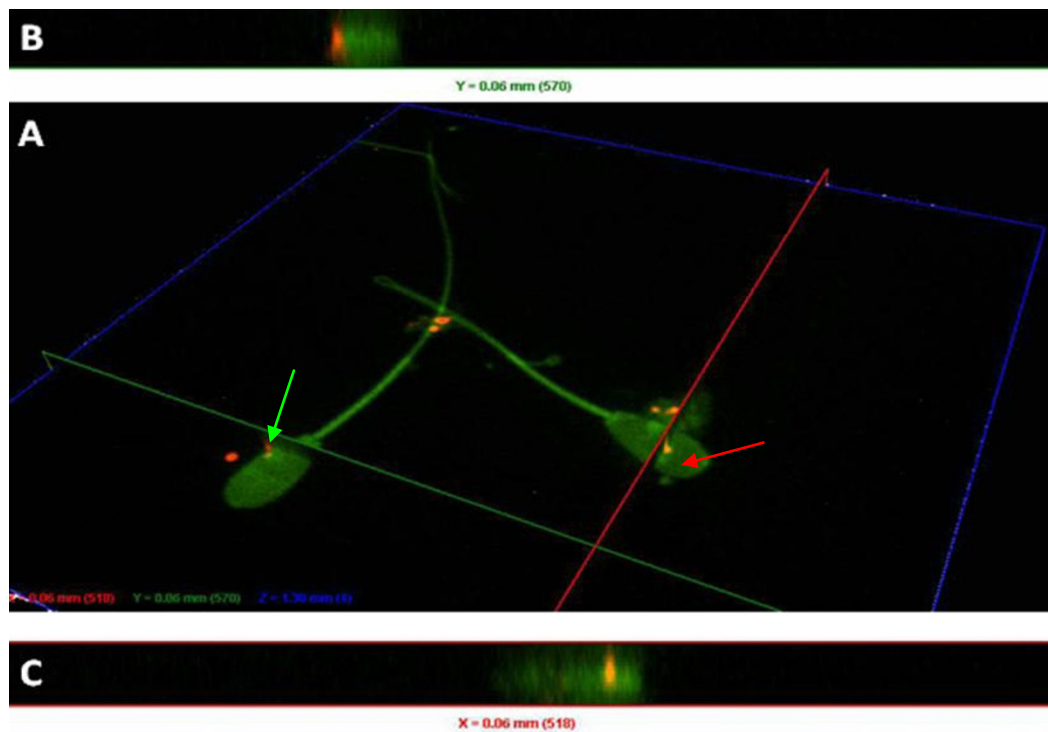
Reproductive disturbances in cattle may cause high mortality and low birth rates due the failure of conception, embryonic death and abortion. The success of embryonic development is partially predetermined by genetic characteristics of male and female gametes. However, fertilization and embryogenesis failures are both documented to be of a seminal origin [10], due to infectious agents. Mollicutes have also been isolated in reproductive tracts of bulls and cows and their presence has been related to the infertility and impairment of embryonic development. Although it is believed that these bacteria remain attached to the surface of epithelial cells, studies have reported *Mycoplasma* spp. surviving inside nonphagocytic cells [8].

Winner et al. [11] reported the ability of the widespread avian pathogen *M. gallisepticum* to invade human epithelial cells and chicken embryo fibroblasts by the gentamicin invasion assay and double immunofluorescence microscopy. These techniques are considered accurate in differentiation of intracellular and extracellular location of mycoplasmas in host cells [11]. However, there are no reports of experimental infection of bovine cells with *U. diversum* by these assays. Herein the labeling *U. diversum* with DiIC<sub>18</sub> fluorochrome and spermatozoa with FITC-phalloidin for confocal microscopy was useful to observe the interaction of this mollicute with bovine spermatozoan cells. The DiIC<sub>18</sub> did not cause background fluorescence in the membranes of spermatozoids and did not affect the viability of ureaplasmas as mentioned for *M. hominis*, a human origin mollicute [12].

The infections were performed here in proportions of 0.01:1 to 10:1 CCU/mL of *U. diversum* per spermatozoid, allowing appropriate analysis. Different rates of invasion were obtained and the lower proportion of ureaplasma/spermatozoid resulted at a greater rate of invasion (10%) with isolated TOURO1. Ueno et al. [13]



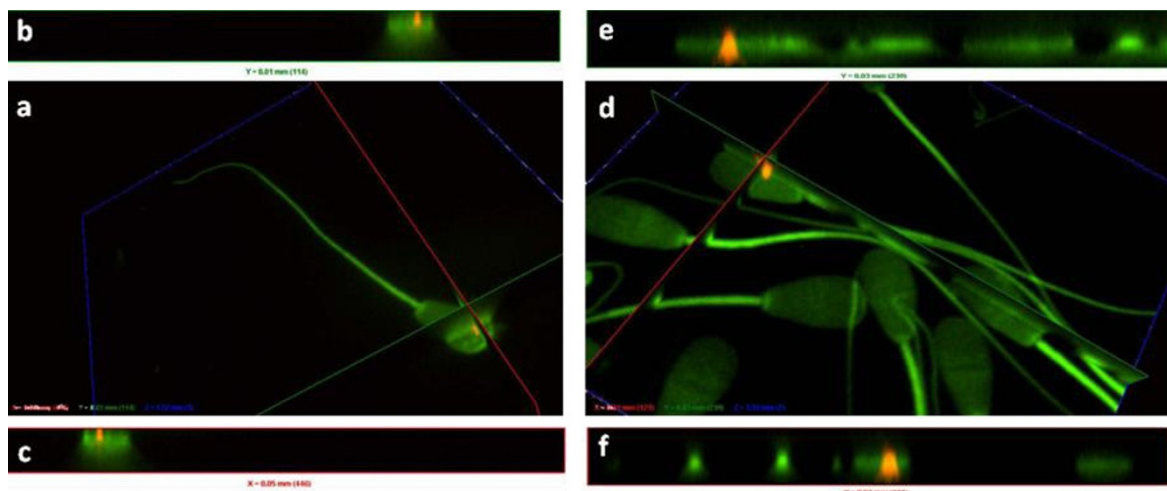
**Figure 1** Interaction of DiIC18-labelled *U. diversum* (isolate 94 after 30 min of infection) with FITC-labelled bovine spermatozoa *in vitro*. A: Spermatozoids in green fluorescence labeled with (FITC) B: Ureaplasmas in red fluorescence labeled with (DiIC) phospholipids. C: A composed of images A and B.



**Figure 2** Interaction of DilC<sub>18</sub>-labelled *U. diversum* (ATCC 49782 after 3 h of infection) with FITC-labelled bovine spermatozoa *in vitro*. A: Orthogonal sectioning along the specified x-axis (red line) and y-axis (green line) with green arrows pointing to clusters of ureaplasmas attached to bovine spermatozoa and red arrows pointing to intracellular location. B: y-axis (green line) confirming the surface location of ureaplasmas (red fluorescent) in the spermatozoa. C: x-axis (red line) confirming the intercellularity of ureaplasma (red fluorescent) in the spermatozoa.

used the infective dose multiplicity of 1-7 *M. genitalium* per EM42 or HeLa cell and also obtained different rates of invasion.

The pool of semen from the three healthy bulls helped to standardize the study mainly for storage and the evaluation of motility and vigor of spermatozoids. The



**Figure 3** Interaction of DilC<sub>18</sub>-labelled *U. diversum* isolate 94 after 30 min (3a) and 3 h (3d) of infection with FITC-labelled bovine spermatozoa *in vitro*. a/d: Orthogonal sectioning along the specified x-axis (red line) and y-axis (green line). b/e: y-axis (green line) confirming the internal location of ureaplasmas (red fluorescent) in the spermatozoa after 30 min and 3 h of infection. c/f: x-axis (red line) confirming the internal location of ureaplasmas (red fluorescent) in the spermatozoa after 30 min and 3 h of infection.

**Table 1** Frequencies of *U. diversum* survival inoculated in spermatozoids after exposure to gentamicin (400µg/mL for 3 h)

Strains and isolated of <i>U. diversum</i>	Ureaplasmas inactivated by gentamicin	
	CCU/mL <sup>a</sup>	%
ATCC 49782	544500	99.00
ATCC 49783	5490000	99.81
A203	54000	98.18
ALVA	990000	99.00
94	5490000	99.81
3175	1000	99.94
TOURO 1	9000	90.00

<sup>a</sup> Values CCU/mL of difference between initial inoculums and recovered after treatment with gentamicin, of 3 independent tests performed in triplicate and standard deviations.

methodologies used are in accordance with Zuccari et al. [14] who concluded that the passage through a column of Percoll<sup>®</sup> is effective for selecting a higher population of motile spermatozoids with intact plas-matic and acrosomal membranes.

In present study, the motility and vigor of bovine spermatozoids infected with ureaplasmas did not show significant difference compared to non infected spermatozoids, in the different time-intervals of incubation. This shows that in monitoring routine procedures, the infected spermatozoids are not distinguished when selected for ferti-lization. Previous studies reported that human spermatozoids infected with ureaplasmas presented high motility as in uninfected cells [15,16]. Núñez-Calonge et al. [17] reported that 2 h of contact with ureaplasmas presented as high a motility, but after 4 h of contact the motility decreased compared to non infected. The infected motile spermatozoa may access and fertilize the oocytes by fertilization *in vivo* or be selected for artificial insemina-tion [9], however, may damaged paternal DNA and impair the embryonic development [16].

The use of fluorochromes to label ureaplasma and spermatozoids allowed distinguishing these cells when coin-fected and observed through confocal microscopy in contrast as described in human spermatozoa infected with mycoplasmas [12,17]. Knox et al. [9] used indirect immu-nofluorescent methodology and showed the adherence of *U. urealyticum* and *U. parvum* on the acrosomal region, midpiece and tail of human spermatozoids. Sylla et al. [18] otherwise related a specific pattern of interaction for *M. mycoides* ssp. *mycoides* LC in the acrosomal region and tail of bovine spermatozoa. Reichart et al. [16] used elec-tronic microscopy and detected *U. urealyticum* within the cytoplasmatic space in human and ram spermatic cells. The ability of *U. diversum* to invade bovine spermatozoids points to a new feature for better controlling the repro-ductive failures of these animals.

The differentiation between extracellular and intracel-lular ureaplasmas was performed by planes Z in a DSU system for confocality, which allowed the location of

bacterial cells relative to the spermatozoids to be identified.

The detected intracellularly of *U. diversum* did not determine the integration of ureaplasma with spermato-zoa DNA as questioned by Bielanski et al. [19]. How-ever, Reichart et al. [16] concluded that *U. urealyticum* has a direct deleterious effect on the DNA and nuclear chromatin of human and ram spermatozoid. According to Cunha et al. [20], *U. urealyticum* resulted in clasto-genic effects on human chromosomes and on the mito-tic process itself, and the clastogenic effects varied with the *U. urealyticum* serotypes evaluated.

The invasion and survival of *U. diversum* inside bull spermatozoids were confirmed and measured by genta-micin assay as described by Yavlovich et al. [21]. The low-passage isolate (TOURO1) recovered from bull semen showed to be more invasive than the high-pas-sage strain 49782, also recovered from bull semen. In fact, Thomas et al. [22] reported that the number of passages *in vitro* of *M. bovis* resulted in different inva-sion rates in cell cultures. The average rate of invasion of TOURO1 in bovine sperm was significantly higher than the isolates from cows. This may indicate that *U. diversum* recovered from bull semen may present a higher ability to invade bovine spermatozoids than the isolates recovered from cows. The binding affinity to sulfogalactoglycerolipid in germ membranes may vary among isolates of *U. diversum* and may influence their pathogenicity as suggested by Knox et al. [9]. Variations in the affinity of *Mollicute* receptors may interfere with their attachment to the host cells and may justify the variation in the rate of invasion. These variations explain the significantly higher rate of invasion of isolate A203 compared with the other isolates recovered from the same anatomic site.

The observations of *U. diversum* adherence and inter-nalization in bull spermatozoids at 30 min of infection and the pattern of invasion did not change for the entire studied period of 6 h. Díaz-García et al. [23] described the maximum adherence of *M. hominis* in human

**Table 2 Determination of CCU/mL of *U. diversum* field isolates and ATCC strains for gentamicin invasion assay and relative frequencies of invasion.**

Strains and isolates of <i>U. diversum</i>	Inoculums of tests (CCU/mL) <sup>a</sup>	Inoculums after gentamicin exposure (CCU/mL) <sup>a</sup>	Frequency of invasion (%) <sup>b</sup>
ATCC 49782	55.00 ± 0.49	0.55 ± 0.4929	1.03 ± 0.92
ATCC 49783	550.00 ± 492.95	1.00	0.18
A203	5.50 ± 0.15	0.10	1.81
ALVA	100.00	1.00	1.00
94	550.00 ± 492.95	1.00	0.18
3175	1000.00	5.50 ± 4.92	0.55 ± 0.49
TOURO 1	1.00	0.10	10

<sup>a</sup> Values CCU/mLx10<sup>4</sup> of 3 independents tests performed in triplicate and standard deviations.

<sup>b</sup> Percentage of ureaplasmas presenting change of colors in broth (CCU/mL) after gentamicin exposure compared to initial inoculums CCU/mL of test and standard deviations.



sperm after 10 min post-infection probably due to the rapid saturation of membrane receptors of the spermatozoa by excessive toxic metabolic compounds released by mollicutes [24]. The ammonia released from ureaplasmas may explain in part the results obtained throughout the studied infection.

The findings in the present study warn of a need for additional care to control the quality of bull semen for reproductive techniques [25]. The regular decontamination of semen was not sufficient to eliminate microorganisms such as *M. bovis*, *M. bovigentialium* [19] and *M. pulmonis* [26] even when antibiotics were added. Knox et al [9], detected that the standard procedures for fertilization in humans did not always remove *M. hominis* from spermatozoa. Therefore, the intracellular location of mollicutes explains the failure of antibiotics to control these bacteria.

The association of gentamycin, tylosin and lincospectin is more effective than other antibiotics in inhibiting many opportunistic microorganisms including Mollicutes in bovine semen [6,27]. The Brazilian Ministry of Agriculture, Livestock, and Food Supply [28] requires the use of gentamycin (250 µg), tylosin (50 µg), lincomycin-spectinomycin (150/300 µg) or penicillin (500 UI), streptomycin (500 UI) in semen. However, Marques et al. [29] isolated *U. diversum* in 37.14% of frozen bovine semen straws from Artificial Insemination Centers in Brazil that supply antibiotic dosages complying with national hygienic guidelines [28].

## Conclusions

The infection *in vitro* of bovine spermatozooids with *U. diversum* provides conclusive evidence of the ability of this mollicute to enter and survive inside reproductive bovine cells making the control of these bacteria more difficult. The intracellular nature of bovine ureaplasma identifies a new difficulty to control the reproductive of these animals.

## Methods

### Strains and isolates of *U. diversum* and culture conditions

*U. diversum* ATCC 49782 and 49783, and three isolates from vaginal mucus (ALVA, 3175, A203) and one isolate from bull semen (TOURO1) were studied. The microorganisms were previously stored at -70°C and then cultured at 37°C in aerobic atmosphere in Ureaplasma Broth Medium supplemented with CRML<sup>®</sup> [30]. The ureaplasma growth was expanded from 2 mL to 150 mL of broth, and confirmed by the alkaline shift and production of small dark brown colonies in solid medium [30].

### Labelling *U. diversum* cells

The ureaplasma growth was harvested from broth cultures by centrifugation at 15,000×g for 50 min at 4°C. The cell pellets were homogenized in 900µl of fresh

broth and mixed with 100µl of 1:50 DiIC<sub>18</sub> solution (Vybrant™ DiI cell-labeling, solution-DiI, V-22885, Molecular Probe, Eugene, Oregon, USA) and incubated at 37°C for 50 min. These suspensions were centrifuged at 20,600×g for 40 min at 4°C and washed in 1 mL PBS 2× (pH 6.5). The fluorochrome labeled ureaplasma were centrifuged again in the same conditions and homogenized in 1.3 mL Sp-TALP [31].

### Suspension of motile spermatozooids

Ejaculates from three healthy bulls were pooled and diluted with Bovimix (Nutricell<sup>®</sup> Nutrientes Celulares, São Paulo, Brazil) without antibiotics and frozen at -80 °C in aliquots of 250µl. The semen was previously tested for mollicute contamination by PCR [32]. The frozen-thawed semen was layered in microtubes with a Percoll gradient (1:1 [vol/vol] mixture of 90%/45%) and centrifuged at 9,000×g for 5 min [33]. The spermatozoid sediments with actively motile cells were washed in 1 mL Sp-TALP by centrifugation at 6,000×g for 2 min, homogenized in Sp-TALP and diluted to 10<sup>6</sup> spermatozooids/100µl Sp-TALP and evaluated for motility/vigor.

### Infection of spermatozooids with *U. diversum*

The experimental infection of spermatozooids was performed as described by Díaz-García et al. [12], with modifications. In microtubes, 100µl of DiIC<sub>18</sub>-labelled *U. diversum* cells were added to 100µl of a spermatozoid suspension in microtubes. The ureaplasma infected spermatozooids and the control of non infected spermatozoid suspensions were incubated at 37°C in 5% CO<sub>2</sub> for 30 min, 3 and 6 h. These tests were performed in duplicate for each time of incubation. The infective dose multiplicity was determined as described by Taylor-Robinson [34]. An aliquot of bacterial suspension was 10-fold diluted in Ureaplasma broth for determination of CCU/mL. The viability of bacteria at different periods of incubation was confirmed on agar plates. Aliquots of infected and non infected spermatozoid suspensions were taken at different time-intervals for analysis of sperm motility/vigor. The motility was determined subjectively in percentage (%) and the vigor on a scale of 0 to 5, by microscopy (400×). For confocal microscopy the spermatozoid cells were initially fixed with paraformaldehyde 3.7% for 20 min at room temperature, washed twice in PBS by centrifugation (6,000 × g for 2 min) and homogenized in 100µl of PBS and stored at 4°C.

### Confocal Microscopy

Internalization of *U. diversum* into bovine spermatozooids was distinguished by fluorescence differences of fluorochromes exposed to the light filters of a confocal microscope. One-hundred fixed spermatozoid suspensions were centrifuged onto glass slides (76 × 26 mm/3

× 1 inch) by a cytological centrifuge. The smears were permeabilized with Triton X-100 0.5% for 10 min, washed with PBS and labeled with 10µl (1:200) of FITC-phalloidin (Sigma®) for 40 min at room temperature. Next, the smears were washed twice in PBS, air-dried and mounted with a 24 × 50 mm coverslip and Vecta-shield mounting fluid (Vector Laboratories, Burlingame, CA, USA). The slides with infected and non infected spermatozooids were observed by a Motorized Inverted System Microscope IX81 Olympus®, coupled with an MT20 illumination system and a 60× oil immersion objective. The plane Z-axis control was determined at 0.5µm.

#### Gentamicin invasion assay

Labeled infected and non infected paired spermatozoid suspensions were incubated at 37°C with 5% CO<sub>2</sub> for 3 h. Next, these suspensions were washed in PBS and centrifuged at 6,000×g for 2 min. The obtained pellet of spermatozooids was homogenized with 200µl Sp-TALP with 400µg/ml gentamicin and incubated for 3 h [21]. The antibiotic exposed suspension was centrifuged and spermatozoid sediment was homogenized with 200µl of Ureaplasma medium and 10-fold diluted with the same broth, in triplicate, for determination of CCU/mL [34]. Each gentamicin resistance assay was repeated three times. Invasion frequencies were calculated as the difference of CCU/mL of ureaplasma suspension samples before and after gentamicin exposure. The differences were calculated by Student's *t* test. Differences with *P* = 0.05 were considered significant.

#### Acknowledgements

This study was supported by FAPESP (grant 06/56855-0). We thank Aricelma P. França for invaluable technical assistance and AcademicEnglishSolutions.com for revising the English.

#### Authors' contributions

MB and JT: all tests realized in this study. BAC and GMMS: confocal analysis. MY, RCO, LMM: bacteria isolation and infection experiment. MEOA: motile spermatozooids acquisition. All authors read and approved the final manuscript.

#### Competing interests

The authors declare that they have no competing interests.

Received: 18 May 2011 Accepted: 27 October 2011

Published: 27 October 2011

#### References

1. Rae DO, Chenoweth PJ, Brown MB: *Ureaplasma* infection in bovine. *Archives of STD/HIV Research* 1995, **7**:239-243.
2. Kreplin CM, Ruhnke HL, Miller RB, Doig PA: The effect of intrauterine inoculation with *Ureaplasma diversum* on bovine fertility. *Can J Vet Res* 1987, **51**:440-443.
3. Howard CJ, Gourlay RN, Brownlie J: The virulence of T-mycoplasmas isolated from various animal species, assayed by intramammary inoculation in cattle. *J Hyg Camb* 1973, **71**:163-170.
4. Fish NA, Rosendal S, Richard BM: The Distribution of Mycoplasmas and Ureaplasmas in the Genital Tract of Normal Artificial Insemination Bulls. *Can Vet J* 1985, **26**:13-15.
5. Doig PA: Bovine genital mycoplasmosis. *Can Vet J* 1981, **22**:339-343.
6. Guerin B, Thibier M: Value of adding antibiotics to frozen bovine semen: the example of Mycoplasmas and campylobacters. *Contracept Fertil Sex* 1993, **21**:753-759.
7. Rosengarten R, Citti C, Glew M, Lischewski A, Drosses M, Much P, Winner F, Brank M, Spergser J: Host-pathogen interactions in mycoplasma pathogenesis: virulence and survival strategies of minimalist prokaryotes. *Int J Med Microbiol* 2000, **290**:15-25.
8. Baseman JB, Lange M, Criscimagna NL, Giron JA, Thomas CA: Interplay between mycoplasmas and host target cells. *Microb Pathog* 1995, **19**:105-116.
9. Knox CL, Allan JA, Allan JM, Edirisinghe WR, Stenzel D, Lawrence FA, Purdie DM, Timms P: *Ureaplasma parvum* and *Ureaplasma urealyticum* are detected in semen after washing before assisted reproductive technology procedures. *Fertil Steril* 2003, **80**:921-929.
10. Saacke RG, Dalton JC, Nadir S, Nebel RL, Bame JH: Relationship of seminal traits and insemination time to fertilization rate and embryo quality. *Anim Reprod Sci* 2000, **60-61**:663-677.
11. Winner F, Rosengarten R, Citti C: *Vitro Cell Invasion of Mycoplasma gallisepticum*. *Infect Immun* 2000, **44**:4238-4244.
12. Díaz-García FJ, Herrera-Mendoza AP, Giono-Cerezo S, Guerra-Infante FM: *Mycoplasma hominis* attaches to and locates intracellularly in human spermatozoa. *Human Reproduction* 2006, **21**:1591-1598.
13. Ueno MM, Timenetsky J, Centonze V, Wewer JJ, Cagle M, Stein MA, Krishnan M, Baseman JB: Interaction of *Mycoplasma genitalium* with host cells: evidence for nuclear localization. *Microbiology* 2008, **154**:3033-3041.
14. Zúccari CESN, Carrijo PR, Leite PA, Scaldelai PRR, Rodovalho NCM, Zanenga CA, Kiefer C, Silva EVC: Selection bovine frozen semen in Percoll® gradient on spermatid parameters. *Rev Bras Saúde Prod An* 2008, **9**:3658-3668.
15. Talkington DF, Davis JK, Canupp KC, Garrett BK, Waites KB, Huster GA, Cassell GH: The effects of three serotypes of *Ureaplasma urealyticum* on spermatozoal motility and penetration in vitro. *Fertil Steril* 1991, **55**:170-176.
16. Reichart M, Kahane I, Bartoo B: *Vivo and In Vitro Impairment of Human and Ram Sperm Nuclear Chromatin Integrity by Sexually Transmitted Ureaplasma urealyticum*. *Infect Biol Reprod* 2000, **63**:1041-1048.
17. Núñez-Calonge R, Caballero P, Redondo C, Baquero F, Martínez-Ferrer M, Meseguer MA: *Ureaplasma urealyticum* reduces motility and induces membrane alterations in human spermatozoa. *Human Reprod* 1998, **13**:2756-2761.
18. Sylla L, Stradioli G, Manuali E, Rota A, Zelli R, Vincenti L, Monaci M: The effect of *Mycoplasma mycoides* ssp. *Mycoides* LC of bovine origin on in vitro fertilizing ability of bull spermatozoa and embryo development. *Anim Reprod Sci* 2005, **85**:81-93.
19. Bielanski A, Devenish J, Phipps-Todd B: Effect of *Mycoplasma bovis* and *Mycoplasma bovigenitalium* in semen on fertilization and association with in vitro produced morula and blastocyst stage embryos. *Theriogenology* 1999, **53**:1213-1223.
20. Cunha RA, Koiffman CP, Souza DH, Takei K: Clastogenic effects of different *Ureaplasma urealyticum* serovars on human chromosomes. *Braz J Med Biol Res* 1997, **30**:749-757.
21. Yavlovich A, Tarshis M, Rottem S: Internalization and intracellular survival of *Mycoplasma pneumoniae* by non-phagocytic cells. *FEMS Microbiol Lett* 2004, **233**:241-246.
22. Thomas A, Sachse K, Dizier I, Grajetzki C, Farnir F, Mainil JG, Linden A: Adherence to various host cell lines of *Mycoplasma bovis* strains differing in pathogenic and cultural features. *Vet Microbiol* 2003, **91**:101-113.
23. Svenstrup FH, Fedder J, Abraham-Peskir J, Birkelund S, Christiansen G: *Mycoplasma genitalium* attaches to human spermatozoa. *Human Reprod* 2003, **18**:2103-2109.
24. Rottem S, Naot Y: Subversion and exploitation of host by mycoplasmas. *Trends Microbiol* 1998, **6**:436-440.
25. Bielanski A: Disinfection procedures for controlling microorganisms in the semen and embryos of humans and farm animals. *Theriogenology* 2007, **68**:1-22.

26. Fraser L, Taylor-Robinson D: **The effect of *Mycoplasma pulmonis* on fertilization and preimplantation development in vitro of mouse eggs.** *Fertil Steril* 1977, **28**:488-498.
27. Shin SJ, Lein DH, Patten VH, Ruhnke HL: **A new antibiotic combination for frozen bovine semen 1. Control of mycoplasmas, ureaplasmas, *Campylobacter fetus* subsp. *venerealis* and *Haemophilus somnus*.** *Theriogenology* 1988, **29**:577-591.
28. Brasil: **Normative Instruction 48 from the Brazilian Ministry of Agriculture, Livestock, and Food Supply: Portaria n° 46, de 30 de julho de 2003.** *Diário Oficial da União* 2003, **149**:4-5.
29. Marques LM, Buzinhani M, Neto RL, Oliveira RC, Yamaguti M, Guimarães AMS, Timenetsky J: ***Ureaplasma diversum* detection in bovine semen straws for artificial insemination.** *Vet Rec* 2009, **165**:572-573.
30. Ruhnke HL, Rosendal S: **Useful protocols for diagnosis of animal mycoplasmas.** In *Mycoplasmosis in Animals: Laboratory Diagnosis*. Edited by: Whitford HW, Rosenbusch RF, Lauerma LH. Iowa, Iowa State University Press; 1994:141-144.
31. Parrish JJ, Susko-Parrish J, Winer MA, First NL: **Capacitation of Bovine Sperm by Heparin.** *Biol Reproduction* 1988, **38**:1171-1180.
32. Buzinhani M, Buim MR, Yamaguti M, Oliveira RC, Mettifogo E, Timenetsky J: **Genotyping of *Ureaplasma diversum* isolates using Pulsed-Field Electrophoresis.** *Vet J* 2006, **177**:688-690.
33. Machado GM, Carvalho JO, Siqueira Filho E, Caixeta ES, Franco MM, Rumpf R, Dode MAN: **Effect of Percoll volume, duration and force of centrifugation, on in vitro production and sex ratio of bovine embryos.** *Theriogenology* 2009, **71**:1289-1297.
34. Taylor-Robinson D: **The role of mycoplasmas in non-gonococcal urethritis: a review.** *Yale J Biol Med* 1983, **56**:537-543.

doi:10.1186/1756-0500-4-455

**Cite this article as:** Buzinhani et al.: Invasion of *Ureaplasma diversum* in bovine spermatozooids. *BMC Research Notes* 2011 **4**:455.

**Submit your next manuscript to BioMed Central  
and take full advantage of:**

- Convenient online submission
- Thorough peer review
- No space constraints or color figure charges
- Immediate publication on acceptance
- Inclusion in PubMed, CAS, Scopus and Google Scholar
- Research which is freely available for redistribution

Submit your manuscript at  
[www.biomedcentral.com/submit](http://www.biomedcentral.com/submit)

